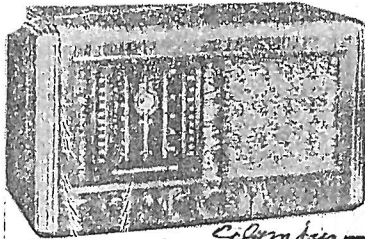


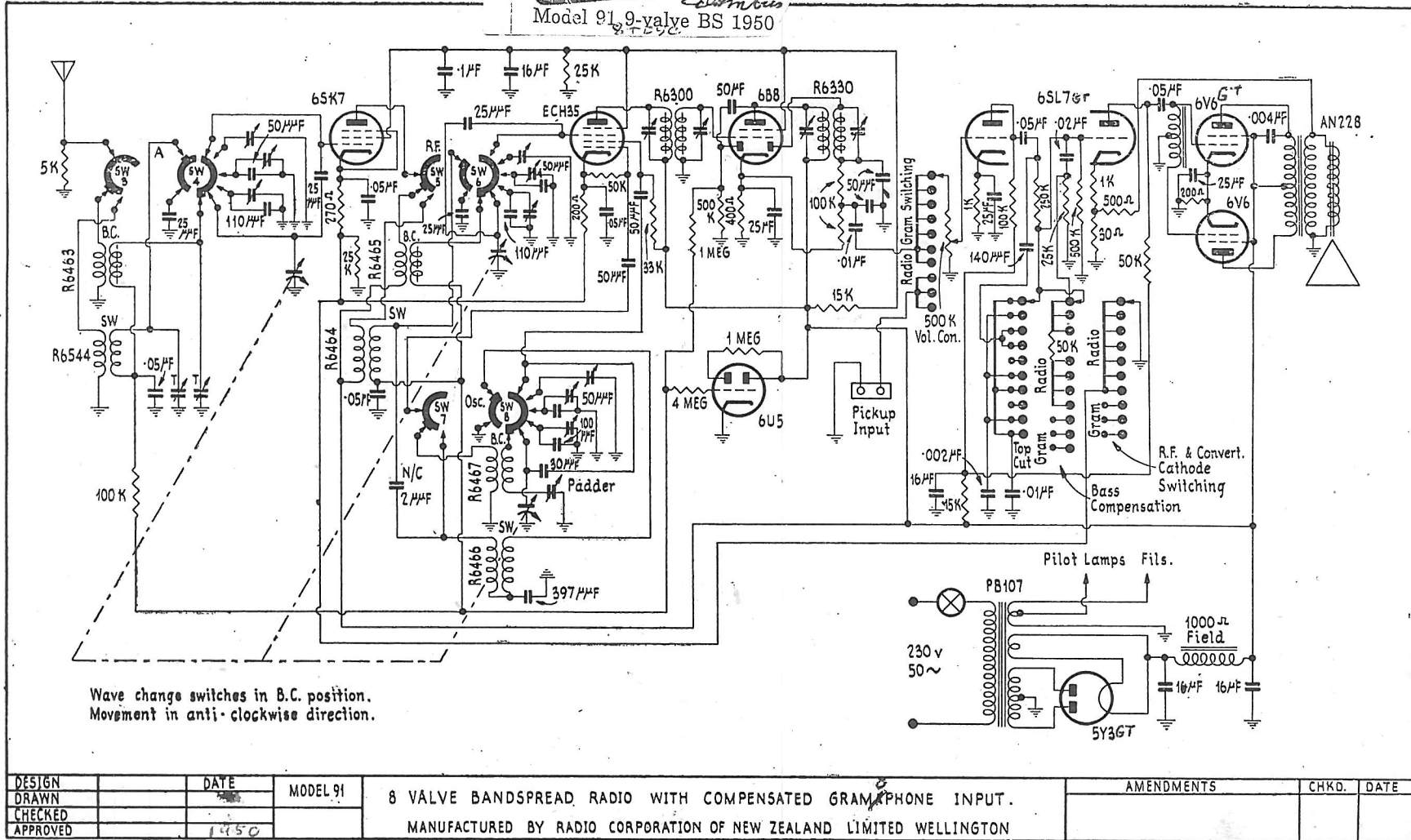
Wave change switches in B.C. position.
Movement in anti-clockwise direction.

DESIGN		DATE	MODEL 91	8 VALVE BANDSPREAD RADIO WITH COMPENSATED GRAMOPHONE INPUT. MANUFACTURED BY RADIO CORPORATION OF NEW ZEALAND LIMITED WELLINGTON	AMENDMENTS	CHKD.	DATE
DRAWN							
CHECKED							
APPROVED							

MODEL 91 (1950)



Columbia
Model 91 9-valve BS 1950



DESIGN		DATE	MODEL 91	8 VALVE BANDSPREAD RADIO WITH COMPENSATED GRAMPHONE INPUT. MANUFACTURED BY RADIO CORPORATION OF NEW ZEALAND LIMITED WELLINGTON	AMENDMENTS	CHKD.	DATE
DRAWN							
CHECKED							
APPROVED		1950					

~~710. 911-4-43~~
C. 195

S/N 03543 = 1950 first issue

S/N 24852 = 1952
uses 6U7G RF (EF39?)

91-03532 (own chassis)
has self
gen. coil in
of set

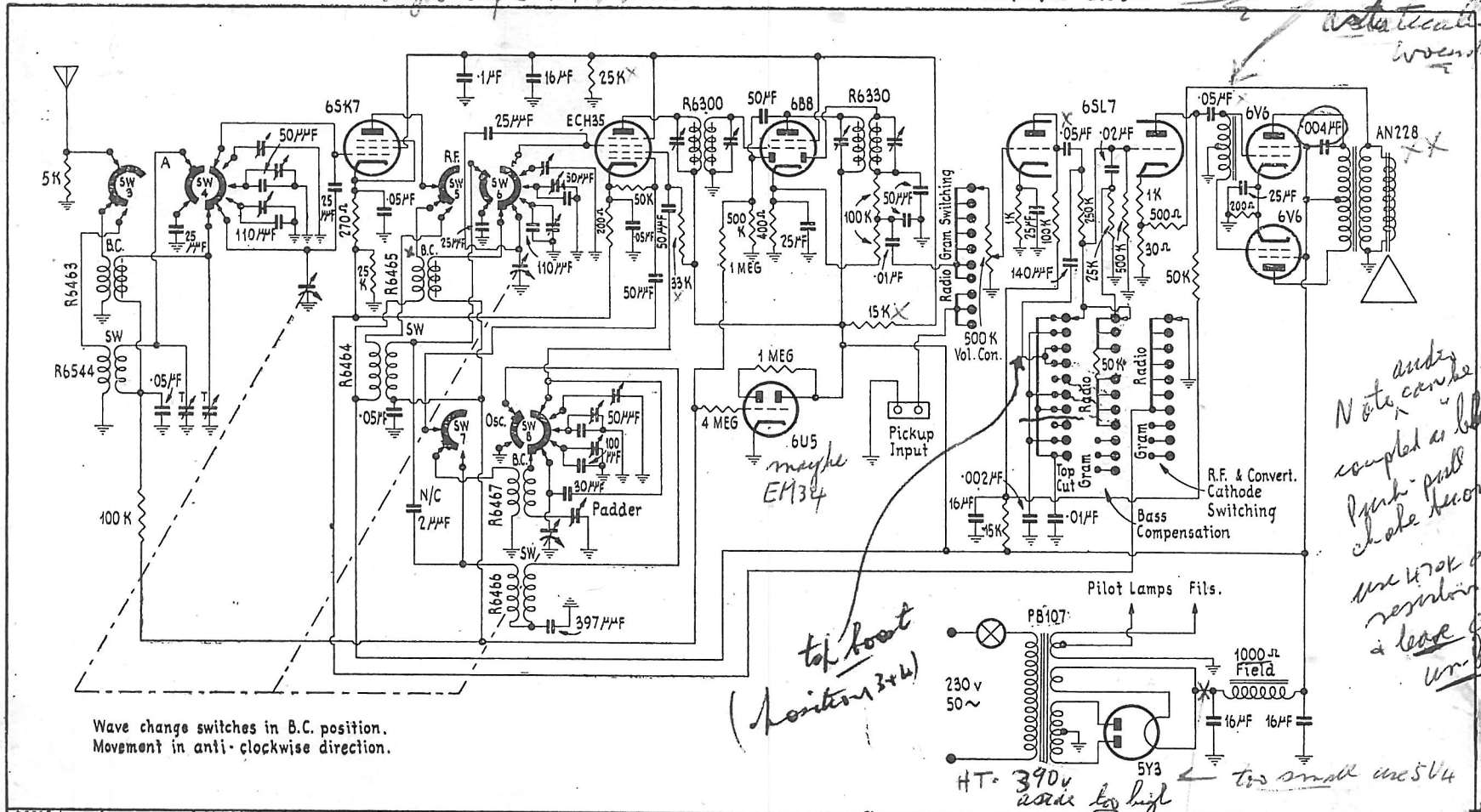
91R user P.M. spkr
but has 6Y7GT
in place of coupling choke
(Puykrouder has)
S/N 52223 = 1955
91R 52223

91342

91R S/N 52101 to 52300
uses 6S07 in place of input choke

Clough couple RF Primaries

distortion: come from short turns on driver choke check S/B 700-2 on data booklet



Wave change switches in B.C. position. Movement in anti-clockwise direction.

Note under coupled as "believe" Park-pull in choke becomes faulty use 470K trim resistor & leave cathode un-bypassed

top boot (position 3+4)

too small use 5Y4

DESIGN	DATE	MODEL 91	8 VALVE BANDSPREAD RADIO WITH COMPENSATED GRAMOPHONE INPUT.	AMENDMENTS	CHKD.	DATE
DRAWN			MANUFACTURED BY RADIO CORPORATION OF NEW ZEALAND LIMITED WELLINGTON			
CHECKED						
APPROVED						

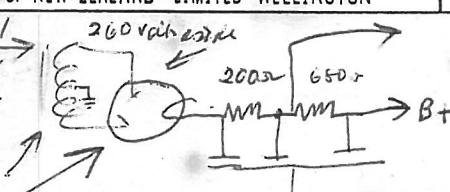
The Last of the BIG ONES

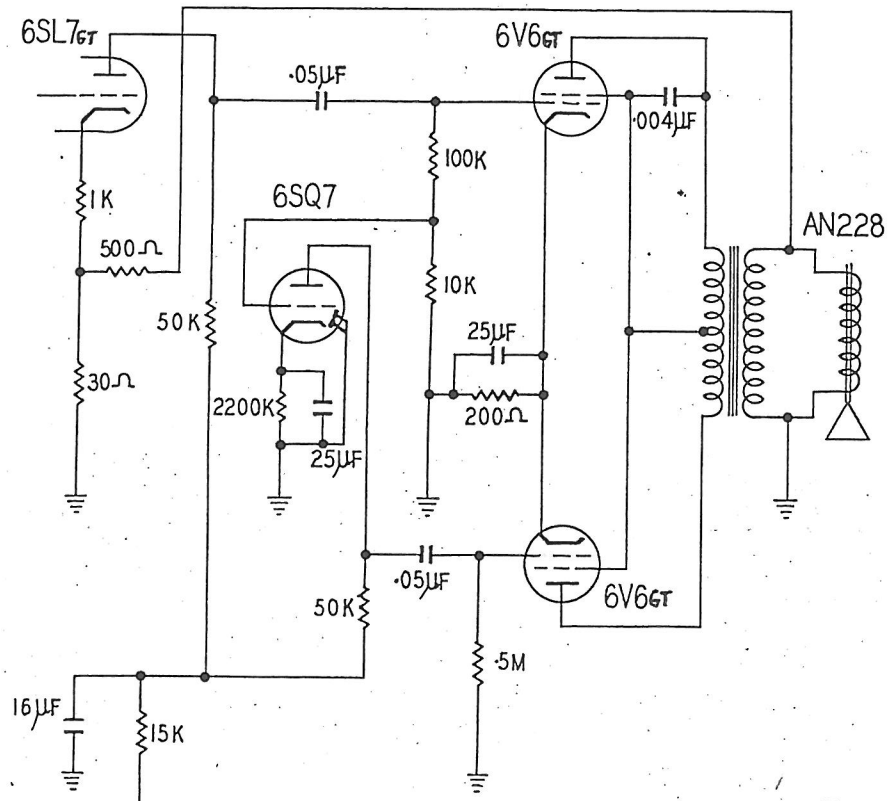
another un-annotated copy held

model 91

*91P (PM spkr)
91R (PM speaker) does not have driver choke*

insert 2500 10W w/resistor in line across B+ from 300V to 260V





DESIGN	LAB	DATE	MODEL 91
DRAWN	f.T.C.	7-5-56	d. 91R
CHECK	<i>[Signature]</i>	7-5-56	
APPROVED	<i>[Signature]</i>	10-5-56	D.No. 384

MODIFICATION TO AUDIO STAGE: SERIAL NOS 52101 TO 52300

(AUDIO COUPLING CHOKE HAS BEEN REPLACED WITH A PHASE INVERTER VALVE) 6SQ7

MANUFACTURED BY RADIO CORPORATION OF NEW ZEALAND LIMITED

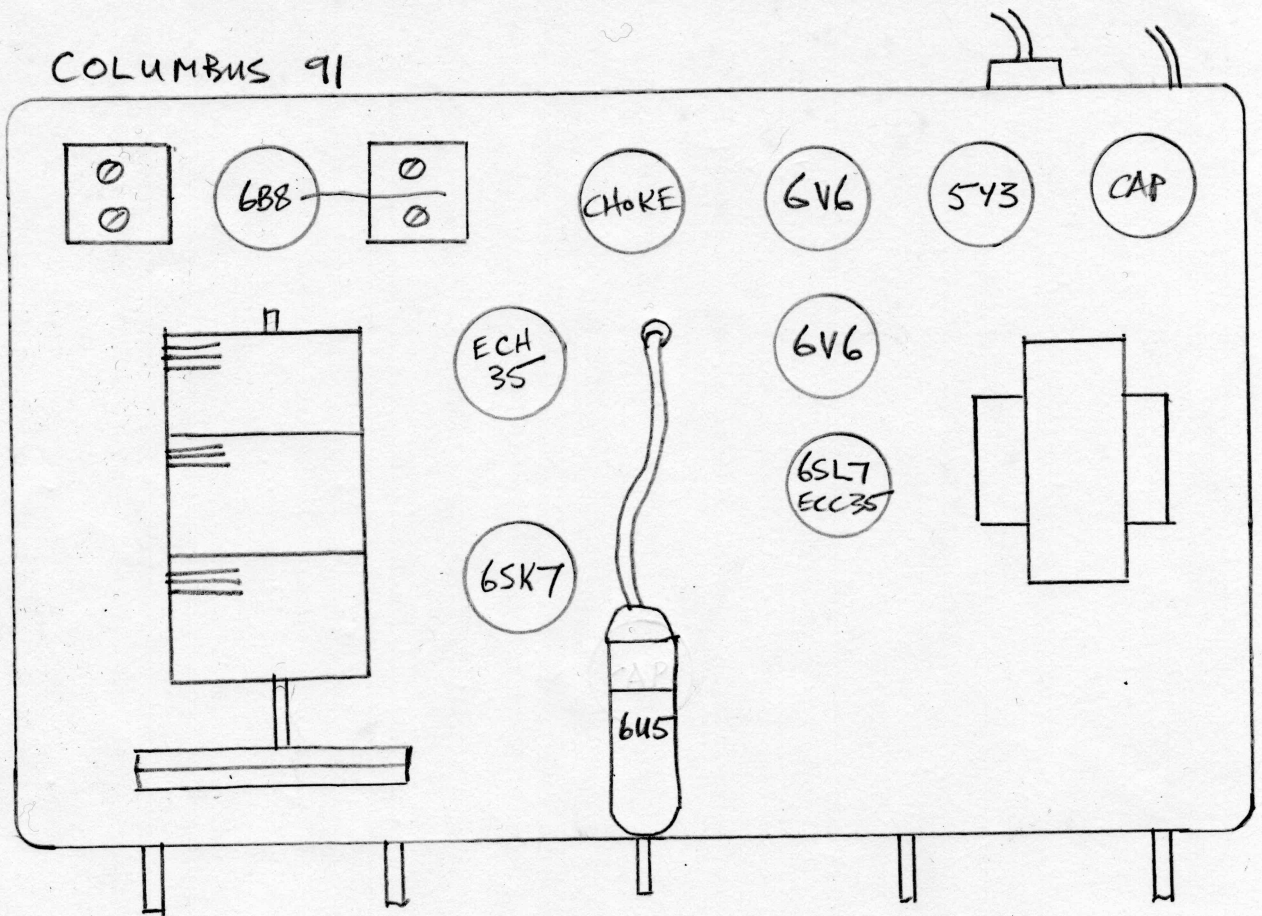
91
4343

Note same A. H. ... between desig date + s/n date
42741 52101 (1952)

91R-52167 sighted
(1952)

Probably the
last one made

COLUMBUS 91



Drawn by J Davidson

COLUMBUS 91
VIEW UNDER CABINET
LOCATION OF
TRIMMERS

