



HIS MASTER'S VOICE

# Service Sheet

ISSUED BY SERVICE DIVISION, HIS MASTER'S VOICE (N.Z.) LTD., G.P.O. BOX 293, WELLINGTON.

## PERTH

525A/BC

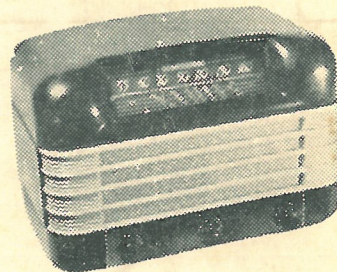
A five valve superheterodyne receiver housed in a moulded bakelite cabinet. Octal valves are used throughout.

CONTROLS: Tuning, Volume, and Tone: ON-OFF.

VALVE COMPLEMENT: Mixer, 7S7; IF, 7B7; Det. Audio, 7C6; Power Output, 7C5; Rectifier, 7Y4.

VALVE SOCKET VOLTAGES:

7S7 Mixer	.....	.....	.....	.....	215	75	—
7B7 IF	.....	.....	.....	.....	215	75	—
7C6 Det. Audio	.....	.....	.....	.....	85	—	—
7C5 Power Output	.....	.....	.....	.....	200	215	12
7Y4 Rectifier	.....	.....	.....	.....	—	—	300
7S7 Triode Plate	.....	.....	.....	.....	75 volts		



Voltmeter—1000 ohms per volt. Volume control OFF, No Applied signal.

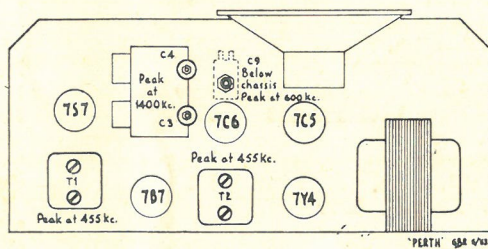
FREQUENCY RANGE: 500 Kc/s—1600 Kc/s.

POWER SUPPLY: AC mains only. 230 volt—50 cycles.  
Consumption .22 amp.

CABINET DIMENSIONS: Height, 9in.; Length, 13in.; Depth, 7in.

### ALIGNMENT INSTRUCTIONS

Rotate tuning control until gang rotor is fully in, then set pointer  $\frac{1}{2}$  in. to the left of the 550 Kc dot or under the letter "c" of "Broadcast." With range selector set to 50 mill watts, connect output meter across speaker voice coil. Turn receiver volume control on full, then by progressive reductions in signal generator output, maintain output meter deflection at approximately half scale. Between the signal generator output cable and the receiver, use for RF a dummy antenna, and for IF a .1 mfd. condenser.



Connect Sig. Gen. to	Set Sig. Gen. to	Radio Dial Setting	Adjust	Adjust for
1. C3 (Rear gang stator)	455 Kc	1500 Kc	C11A, C11, C10A, C10	Max. Output
2. Aerial lead	600 Kc	600 Kc 'Rock Gang'	C9	Max. Output
3. Aerial lead	1400 Kc	1400 Kc	C4, then C3	Max. Output

Repeat 2 and 3

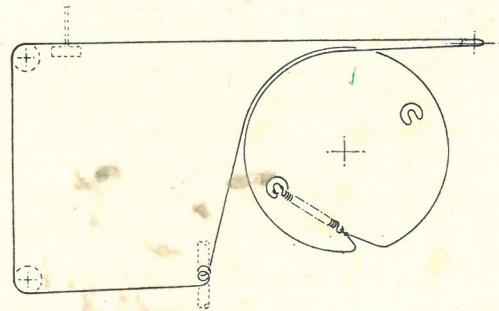
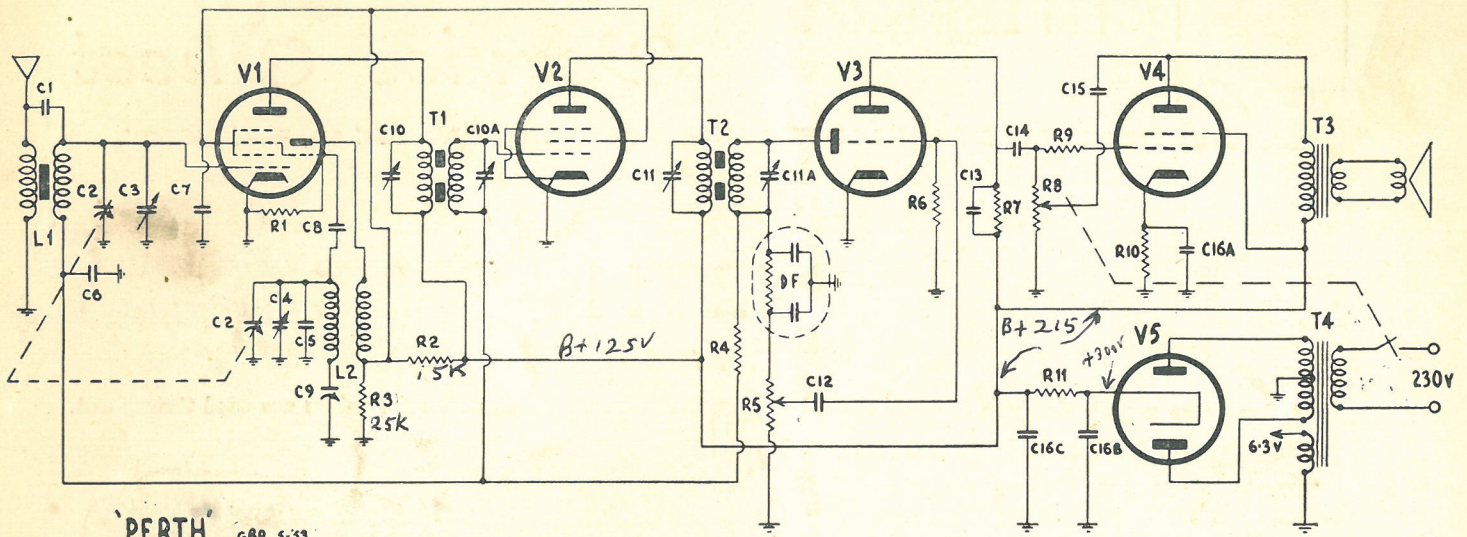
It will be noted that C10A does not resonate sharply. This does not indicate that C11 is defective.

*doesn't it?*

*Schematic dated May 1953*

*525A/BC*





CONDENSERS

Store Part No.	
C1	1500—P1 2 pfd Ceramicon
C2	1500—R1 2 gang 'Polar' C1002
C3, 4	1500—F5 3-30 Philips trimmer
C5	1500—M6 10 pfd SM
C6	1500—A7 .05 mfd. 350v
C7	1500—J1 .1 mfd. 350v
C8, 13	1500—O .0001 mfd. mica.
C9	1500—O8 Padder Type TP8D
C10, 10A	1500—I3 Dual trimmer base 130-130
C11, 11A	1500—I3 Dual trimmer base 130-130
C12	1500—B5 .01 mfd. 350v
C14	1500—B4 .01 mfd. 500v
C15	1500—J .00025 mfd. mica.
C16	1500—N4 40-40-20 Electro. 350v
<b>VALVES</b>	
V1	1400—R2 7S7—Mixer
V2	1400—Q9 7B7—IF
V3	1400—R1 7C6—Det. Audio
V4	1400—R 7C5—Output
V5	1400—R3 7Y4—Rectifier

RESISTORS

Store Part No.	
R1, 9	1300—F8 47k ½ watt
R2	1300—E5 15k 1 watt
R3	1300—L1 25k 1 watt
R4	1300—J1 2 meg. ½ watt
R5	PO228 ½ meg V.C. less switch
R6	1300—J5 4.7 meg. ½ watt
R7	1300—K4 250k ½ watt
R8	PO213 ½ meg. tone cont. with switch
R10	1300—A5 330 ohm. 1 watt
R11	1300—C5 1500 ohm. 5 watt w.w.
<b>COILS</b>	
L1	CO1271 Aerial coil B/C
L2	CO1272 Oscillator coil B/C
<b>TRANSFORMERS</b>	
T1	TR28 1st IF x-former
T2	TR29 2nd IF x-former
T3	SP937 Output x-former and Rola 5H
T4	TR25 Power transformer
DF	FI1310 Diode filter (Dubilier)