

TECHNICAL INFORMATION

MODEL R.C.B.
MINNOW

6V. BANDSPREAD MANTEL

DESIGNED AND MANUFACTURED

by

RADIO (1936) LTD.

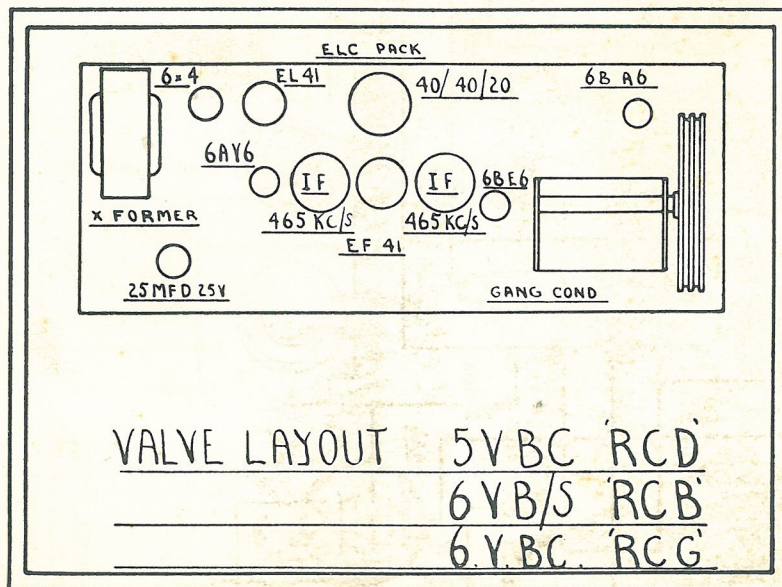
Power Supply	230v. A.C. 50 cp/s.	Rating	60 watts
Tuning Range	1600kc/s. - 550 kc/s.	Speaker	Rola 6-9 H.
17.8 mc/s. - 15.2 mc/s. - 11.8 mc/s.		Power Output	3 watts
9.6 mc/s. - 7.15 mc/s. - 6.1 mc/s.		I.F. Frequency	460 kc/s.

CIRCUIT DESCRIPTION:

A type 6BA6 valve is employed as a radio frequency amplifier and is coupled to a type 6BE6 frequency changer, which is in turn coupled by means of a double tuned high gain intermediate frequency transformer to a type EF41 I.F. amplifier. A second high gain I.F. transformer is followed by a type 6AV6 valve combining the functions of detection A.G.C. source and voltage amplification which is in turn capacitively coupled to a type EL41 power amplifier. The 230v. A.C. mains source is converted to Direct Current by means of a double wound transformer, 6 x 4 rectifier and filter system.

ANTENNA:

A standard inverted "L" type antenna with a flat top of approximately 30 feet is recommended.



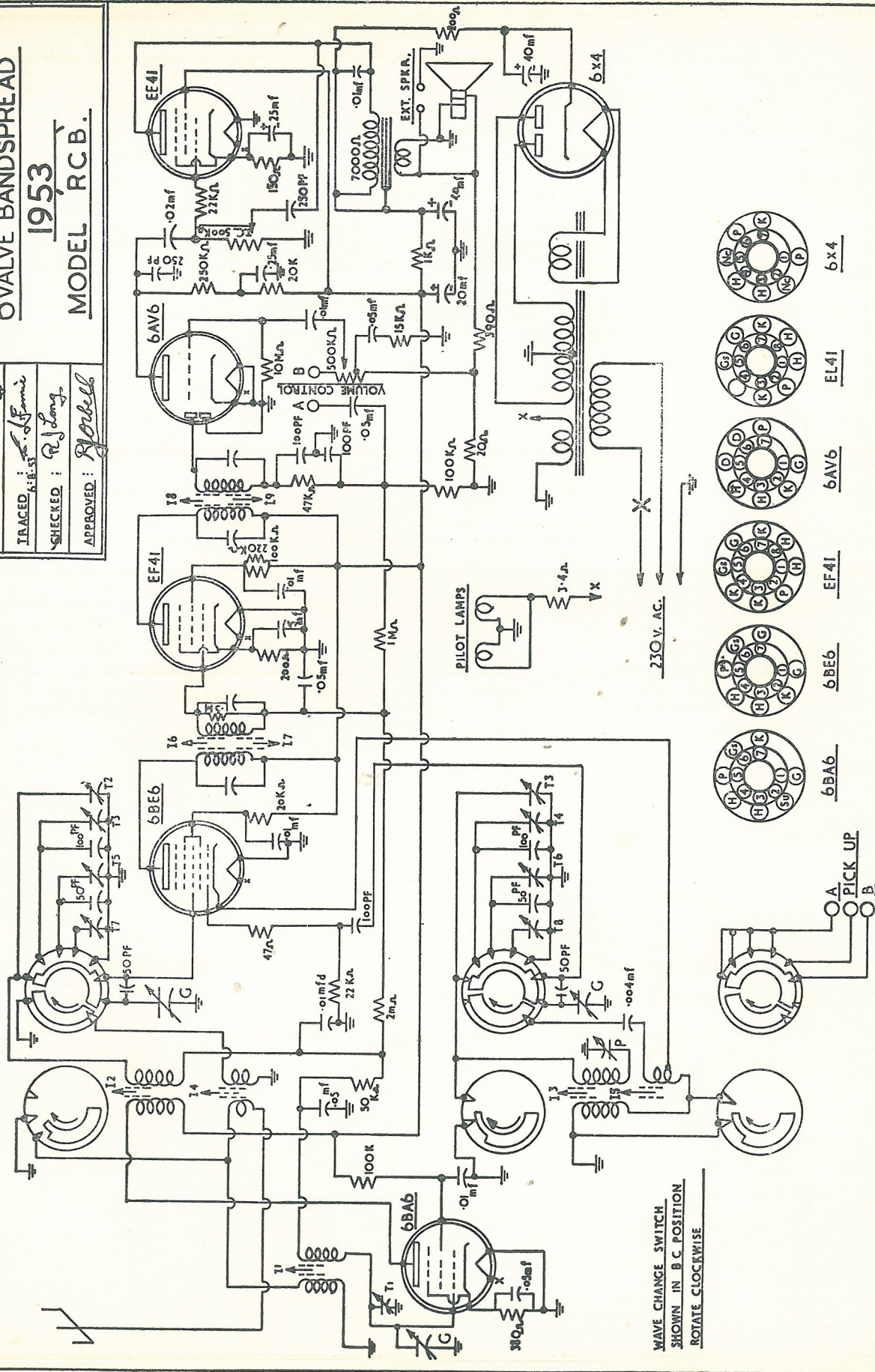
Handwritten signature

6 VALVE BANDSPREAD

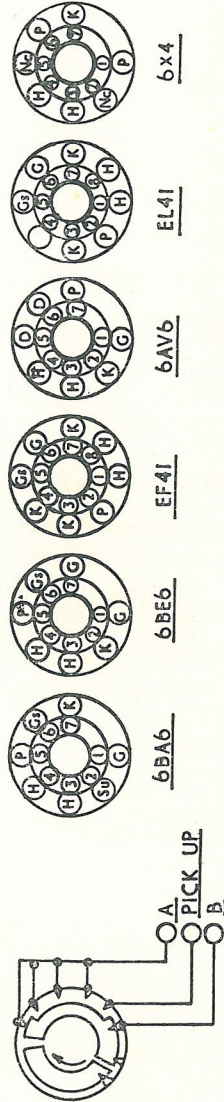
1953

MODEL RCB.

DRAWN : R J Long
 TRACED : R J Long
 CHECKED : R J Long
 APPROVED : Spelber



WAVE CHANGE SWITCH
 SHOWN IN B C POSITION
 ROTATE CLOCKWISE



WAVE CHANGE SWITCH
 SHOWN IN B C POSITION
 ROTATE CLOCKWISE

VOLTAGES APPEARING BETWEEN VALVE PINS AND CHASSIS FRAME.

VALVE PIN No.	1	2	3	4	5	6	7	8
6BA6	-.24v. D.C.	1.9v. D.C.	6.2v. A.C.	—	215v. D.C.	68v. D.C.	1.9v. D.C.	
6BE6	- 5v. D.C.	—	6.2v. A.C.	—	215v. D.C.	92v. D.C.	-.25v. D.C.	
EF41	—	215v. D.C.	1.5v. D.C.	1.5v. D.C.	92v. D.C.	-.3v. D.C.	1.5v. D.C.	6.2v. A.C.
6AV6	-.8v. D.C.	—	6.2v. A.C.	—	-.5v. D.C.	—	105v. D.C.	
EL41	6.2v. A.C.	230v. D.C.	5.2v. D.C.	—	215v. D.C.	—	5.2v. D.C.	—
6 x 4	210v. A.C.	—	—	—	—	200v. D.C.	250v. D.C.	

D.C. RESISTANCES.

AER. Coil Prim.	44 ohms	I.F. Prim.	7 ohms
" " Sec.	3 ohms	" Sec.	7 ohms
DET. " Prim.	.4 ohms	Power Xformer Prim.	60 ohms
" " Sec.	3 ohms	" " Sec.	350 ohms
OSC. " Prim.	.2 ohms	Speaker Xformer Prim.	
" " Sec.	2 ohms	" " Sec.	

ALIGNMENT INFORMATION:

Adjust.
Adjust.

DUMMY ANT.	Generator Coupled to:	Generator Freq.	Receiver Dial Setting	ADJUST	Approx. Sens. for 50m.v. output
.1 mfd	Control Grid EF41	460 Kc/s.	550 Kc/s.	2nd I.F. Trimmers For Max.	1300 m.v.
.1 mfd	Control Grid 6BE6	460 Kc/s.	550 Kc/s.	All I.F. Trimmers For Max.	30 m.v.
RMA Standard	ANT. LEAD	1400 Kc/s.	1400 Kc/s.	Osc. Trimmer For Max.	
"	"	1400 Kc/s.	1400 Kc/s.	R.F. and DET. Trimmer For Max.	Better Than 1 micro volt
"	"	600 Kc/s.	Through 600 Kc/s.	Padder for Max.	Better Than 1 micro volt

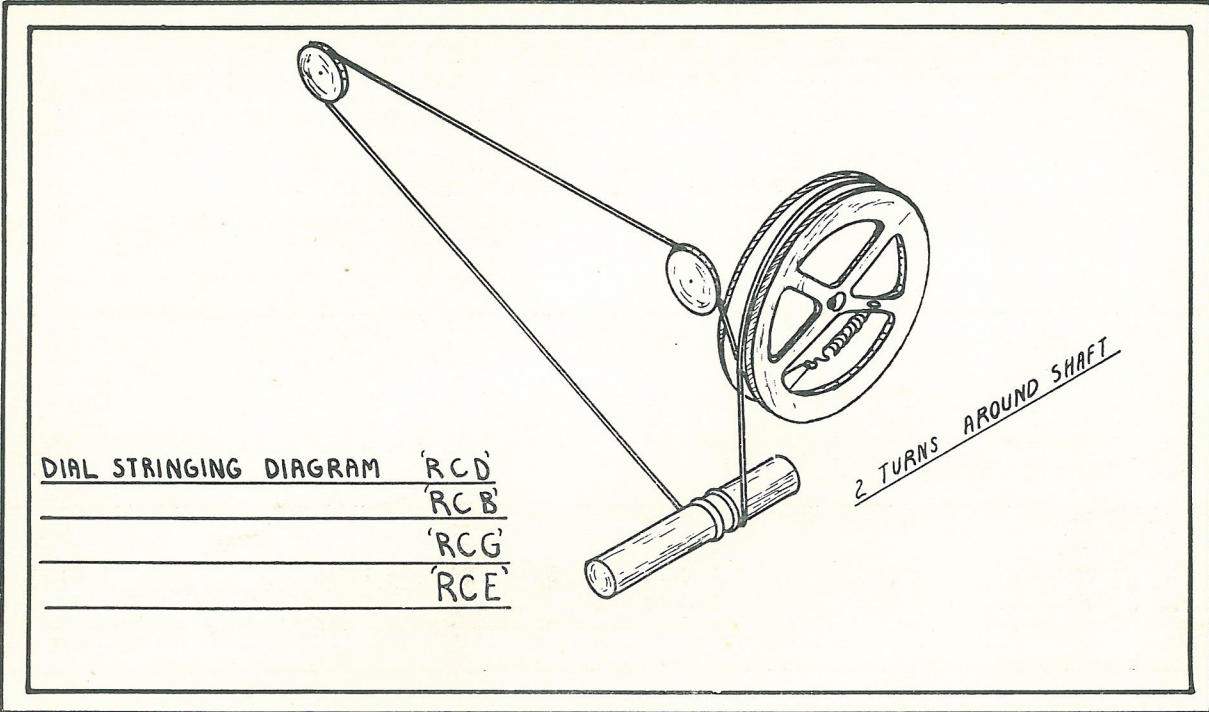
CALIBRATION AND ALIGNMENT OF S.W. BANDS—

Calibration:

Band 2—Set T4 on 9.6 m.c. Set Iron Core L5 on 6.1 m.c.
 Band 3—Set T6 on 11.6 m.c.
 Band 4—Set T8 on 15.2 m.c.

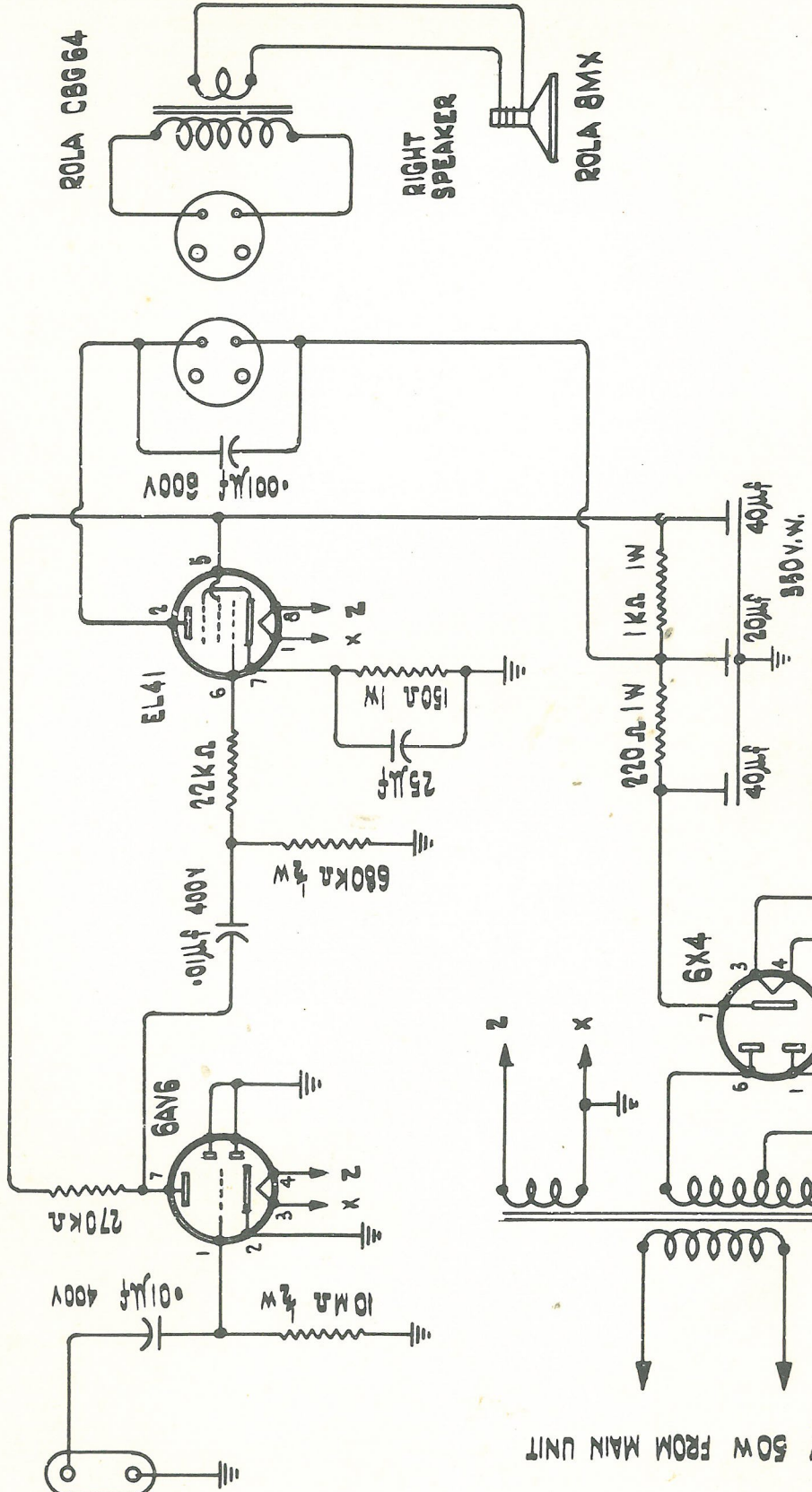
Alignment:

Band 2—Adjust T3 for Max. on 9.6 m.c. Adjust L4 for Max. on 6.1 m.c.
 Band 3—Adjust T5 for Max. on 11.6 m.c.
 Band 4—Adjust T7 for Max. on 17.8 m.c.



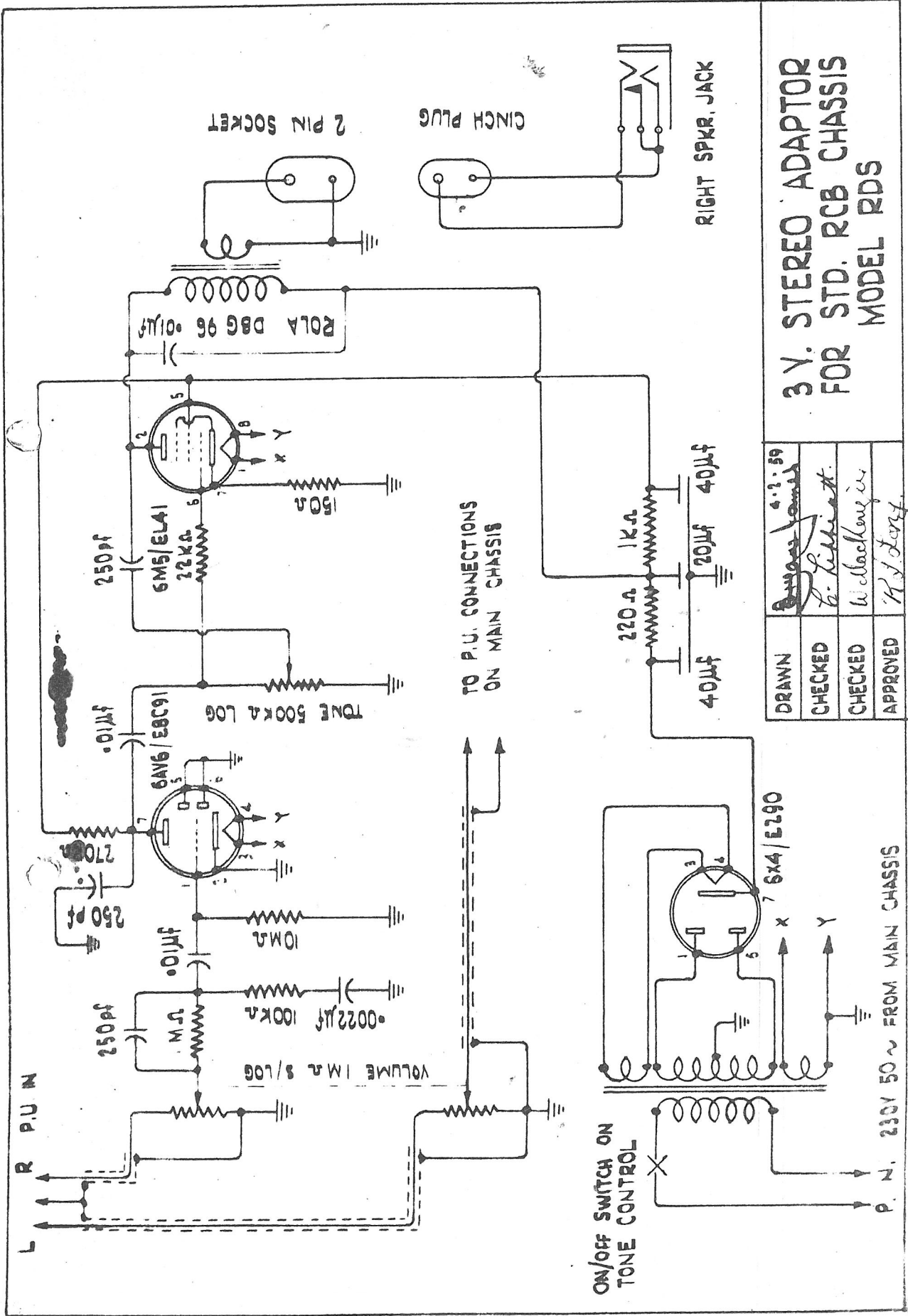
AMENDMENTS AND REMARKS.

INPUT FROM MAIN UNIT



3 VALVE SUB-CHASSIS
STEREO CONVERSION
MODEL RCB/S

DRAWN	28-1-59
CHECKED	<i>W. J. Long</i>
CHECKED	<i>L. Lippitt</i>
APPROVED	<i>R. J. Long</i>



DRAWN	<i>[Signature]</i>	4-2-59
CHECKED	<i>[Signature]</i>	
CHECKED	<i>[Signature]</i>	
APPROVED	<i>[Signature]</i>	

**3 V. STEREO ADAPTOR
FOR STD. RCA CHASSIS
MODEL RDS**

P. N. 230V 50~ FROM MAIN CHASSIS

The INSIDE Story . . . *RCB classes*

Secrets of ULTIMATE-EKCO
quality and performance

All radios and radiograms look smart today, but it's what's inside that gleaming cabinet that counts! You see, right down to the chassis itself every ULTIMATE radio and radiogram is better engineered, better designed, and the precision finish right through will give you top performance! Every ULTIMATE set is carefully checked and tested, not once, but many times . . . every set is treated throughout to resist corrosion, even down to the tiniest part. There's no doubt about it — you can buy with confidence when you buy ULTIMATE!

